



### 產品說明:

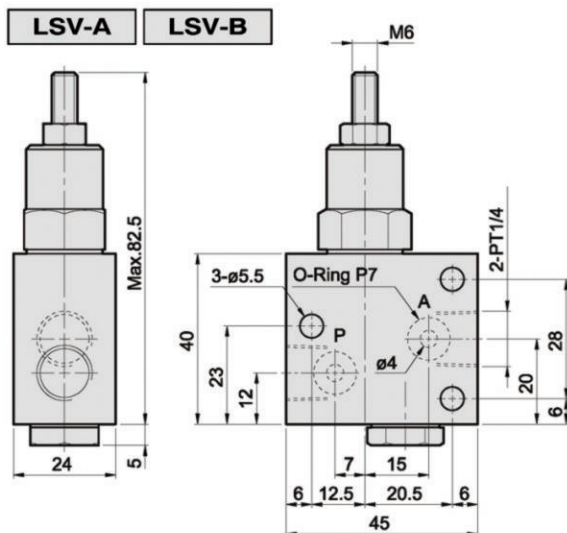
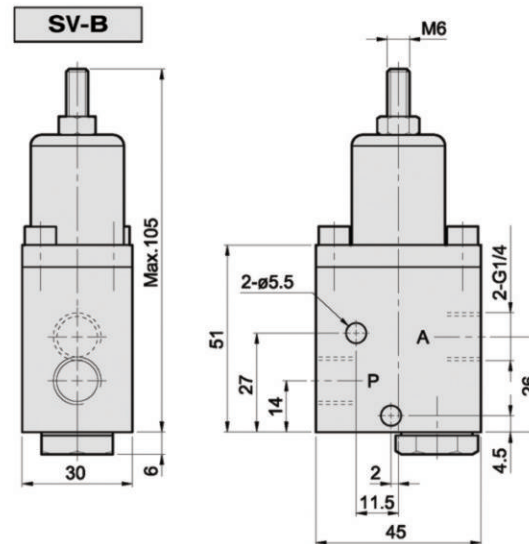
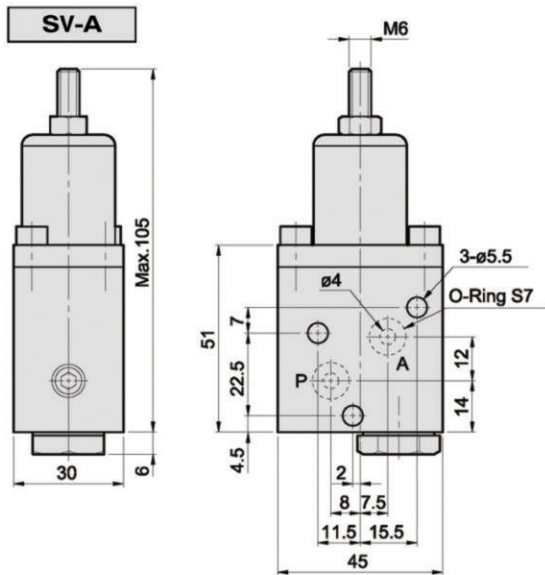
- 此型式油壓順序閥，特別適用於夾具回路，由壓力決定油壓缸之順序運動，體積小，耐壓高，安裝于回路中，不需其他控制，即可得到順序動作確實之效果。
- 本產品提供A：油路板型B：配管型兩種型式，可依據夾具整體設計安裝方式需要作適當選擇。

### Application

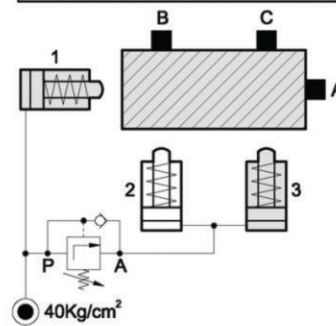
- The hydraulic sequential valve is specially fit for the circuit of jig, the sequential motion is decided by hydraulic cylinder, small volume, endurable to high temperature. installed in circuit need not other control that will result in all exactitude of sequential motion.
- The series provides two types of mounting type for choice. A type is a manifold mounting type and B type is a line mounting type. You get a flexible choice of mounting types to suit your fixture design.

### 型式與壓力調整範圍: Type and pressure Range

油路板型 manifold type		配管式 Line type		Kg
LSV-A	10-70 Kg/cm <sup>2</sup>	LSV-B	10-70 Kg/cm <sup>2</sup>	
SV-A1		SV-B1		0.59
SV-A2	50-350 Kg/cm <sup>2</sup>	SV-B2	50-350 Kg/cm <sup>2</sup>	0.59



### 迴路圖 Circuit diagram



- 油壓缸1將工作件推向A壓力達到SV設定40Kg/cm<sup>2</sup>。
- 油壓缸2.3同時將工作推向B.C,獲得順序夾持動作。

- The hydraulic cylinder 1 pushes workpiece to A. The pressure reaches to the setting value 40kg/cm<sup>2</sup> on SV.
- The hydraulic cylinders 2 and 3 push workpiece to B and C to provide sequential clamping motion.