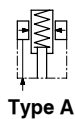


HSP 高壓支撐缸

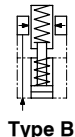
High Pressure Supporting Cylinder

• Rod: $\phi 16$ mm • Pmax: 500kg/cm²

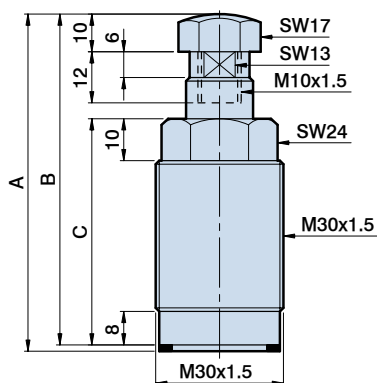
彈簧頂出型 **HSP-16A**
Spring ejecting type



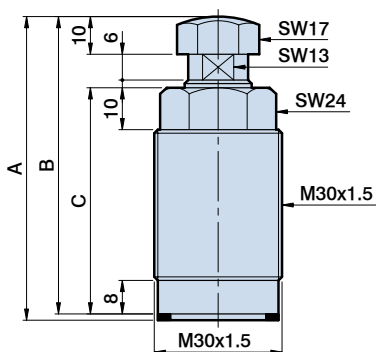
油壓頂出型 **HSP-16B**
Hydraulic ejecting type



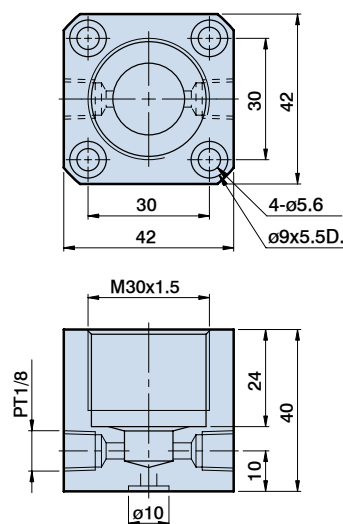
HSP-16A



HSP-16B

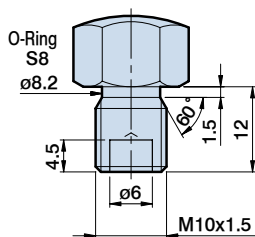


HSP-16Base

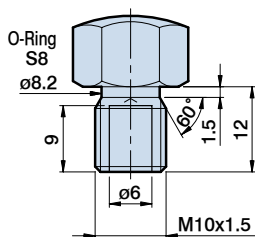


頂桿螺帽尺寸與適用型號 Rod nut sizes and applicable models

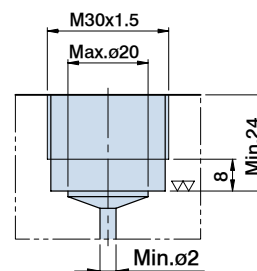
HSP-16A1 HSP-16B1
HSP-16A2 HSP-16B2



HSP-16B3
HSP-16B4



安裝底座示意圖 Mounting base diagram



Dimensional table

| ITEM | MODEL | HSP-16A1 | HSP-16A2 | HSP-16B1 | HSP-16B2 | HSP-16B3 | HSP-16B4 |
|---|-----------------------|------------------------|----------|-------------------|----------|-------------------|----------|
| 頂桿直徑 Rod size | mm | $\phi 16$ | | $\phi 16$ | | $\phi 16$ | |
| 頂桿行程 Rod stroke | mm | 8 | | 8 | | 15 | |
| 最小操作壓力 Min. pressure | | 100 Kg/cm ² | | | | | |
| 頂桿接觸工件力量 Rod force of touching work-piece | | Min=0.8Kg Max=1.3Kg | | Min=1Kg Max=2.3Kg | | Min=1Kg Max=2.3Kg | |
| 理論支撐力 Supporting force | 500Kg/cm ² | 650Kg | 950Kg | 650Kg | 950Kg | 650Kg | 950Kg |
| A | mm | 80.5 | 90.5 | 72.5 | 82.5 | 79.5 | 89.5 |
| B | mm | 79 | 89 | 71 | 81 | 78 | 88 |
| C | mm | 54 | 64 | 54 | 64 | 61 | 71 |